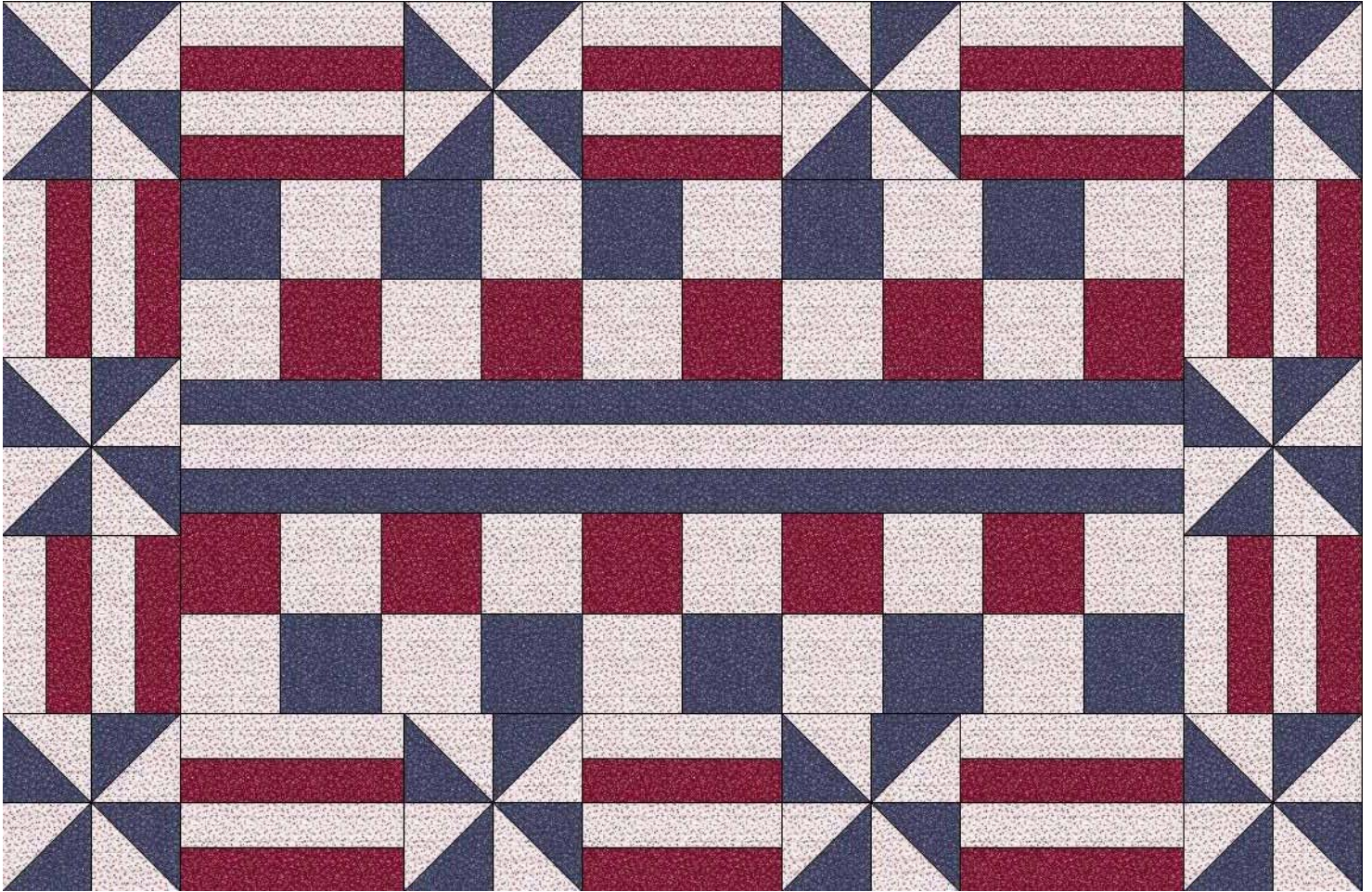


Diy-moms.COM

American Banner

Designed by Rita Fishel to showcase the Creative Grid Charming Strip Stashbuster Ruler
(Item #CGRCSS)

Contact Rita at <http://www.creationssewclever.com/>

Finished Size: 40" x 61" Fabrics by Henry Glass

Fabric Requirements:

Red (Item #2480-2)	3/4 Yard
Blue (Item #2480-1)	1 1/2 Yards
Cream (Item #2479-2)	1 5/8 Yard
Backing Fabric (Your Choice)	2 2/3 Yards

American Banner

Page Two

Cutting Instructions:

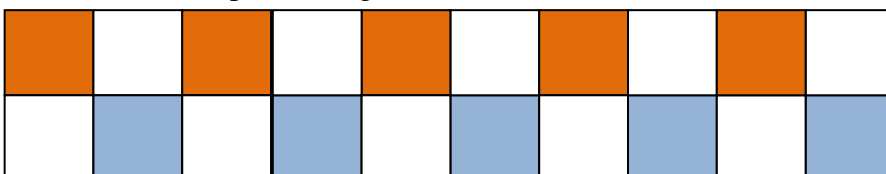
Red (Item #EYJ557321)	3/4 Yard	Cut 5 – 2 ½” Strips the Width of the Fabric Sub Cut ONE of the Strips into 2 - 2 ½” x 20 ½” Pieces Cut 2 – 5” Strips Sub Cut into 10 – 5” Squares
Blue (Item #EYJ557380)	7/8 Yard	Cut 3 – 2 ½” Strips the Width of the Fabric Sub Cut One of the Strips into 2 - 2 ½” x 20 ½” Pieces Cut 4 – 5” Strips the Width of the Fabric Sub Cut into 30 – 5” Squares
Cream (Item #DRJ659587)	1 ¼ Yard	Cut 7 – 2 ½” Strips the Width of the Fabric Sub Cut TWO of the Strips into 4 - 2 ½” x 20 ½” Pieces Cut 5 – 5” Strips the Width of the Fabric Sub Cut Three of the Strips into 8 – 5” Squares - You Need 40
Binding Fabric	½ Yard	Cut 6 Strips the Width of the Fabric for the Binding
Backing Fabric	2 2/3 Yards	Cut 2 – 1 1/3 Yard Pieces (Horizontal Seam)

Blue Stripes Center:

- Sew a 2 ½” x 20 ½” blue strip end to end to a 2 ½” by the width of fabric strip. Repeat to make two sets that measure approximately 60”. Repeat this step using the cream strips. Press the seams open. Sew these three strips together lengthwise to form a three strip strata with the cream strip in the middle. Press the seams toward the blue strips.
- Trim off the selvages and square up one end of this striped set. Cut this blue stripe center to 45 ½”.

Four-Patches:

- Sew a blue square to a cream square. Press the seams toward the blue square. Sew a total of 10 pairs.
- Sew a red square to a cream square. Press the seams toward the red square. Sew a total of 10 pairs.
- Sew two pairs together (one of each color), butting seams to form a four-patch. Make 10 four-patches. Sew five of these four-patches together to form a row. Make a total of two sets.

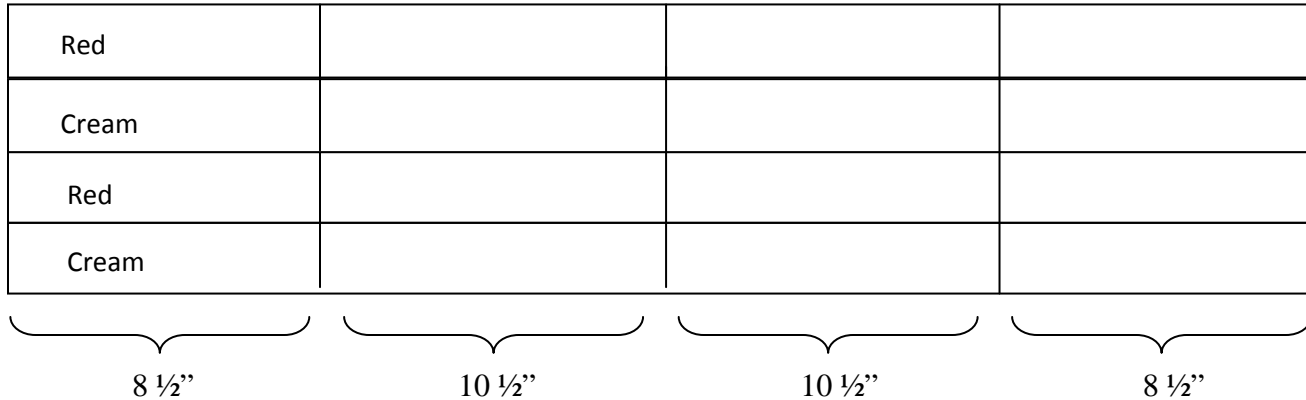


American Banner

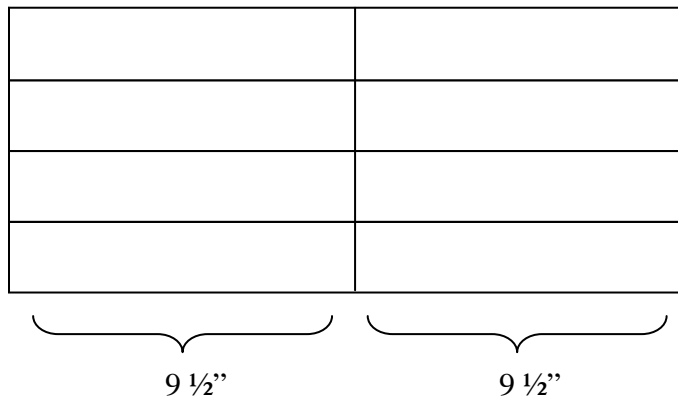
Page Three

Stripes:

- Sew one 2 ½” by width of fabric red strip to a 2 ½” by width of fabric cream strip along the 40” length of the strip. Press the seam toward the red strip. Make a total of four strip sets. Sew two of these strip sets together to make two units of four strips. Press the seam toward the red strip. Make a total of two strip sets. These strip sets should be 8 ½” wide



- Sub cut each strip set into 2 – 8 ½” x 8 ½” segments and 2 – 10 ½” x 8 ½” segments.
- Sew a 2 ½” x 20 ½” red strip to a 2 ½” x 20 ½” cream strip along the 20 ½” length of the strip. Press the seam toward the red strip. Make a total of two strip sets. Sew two of these strip sets together to make one unit of four strips. Press the seam toward the red strip. This strip set should be 8 ½” wide.



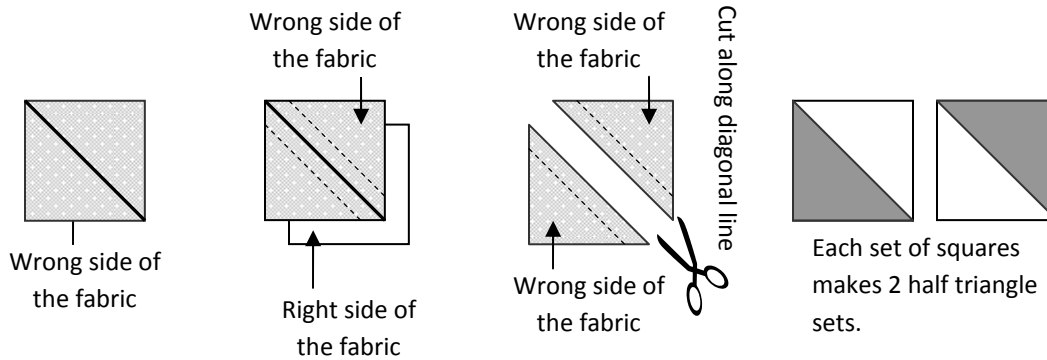
- Sub cut this strip set into 2 – 8 ½” x 9 ½” segments.

Half-Square Triangles – Make 40:

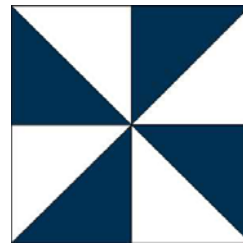
- Place a cream 5” square – right sides together – on top of a blue 5” square. Make a total of 20 sets. Draw a line across the diagonal and stitch a seam ¼” on each side of the drawn line. Be sure to use a pencil or a marking tool that is water soluble. (Ink may bleed onto your quilt when you wash it!) Cut on the drawn line.

Page Four

- Open the half-square triangles and press the seams open. Each set of squares will make two half-square triangles. These squares will be slightly larger than 4 1/2". Square these half-square triangles up to 4 1/2" using the Charming Stashbuster Ruler.



- Sew four half-square triangles together to form a pinwheel.
- Make a total of 10 pinwheels.



Putting it all Together:

- Sew a four-patch set to opposite sides of the Blue Striped center unit. Press the seams toward the blue stripes.
- Using the picture as a guide, sew a pinwheel to opposite sides of a 9 1/2" x 8 1/2" red striped segment. Sew a 10 1/2" x 8 1/2" striped segment to each end of this pieced unit. Make a total of two sets.
- Sew these pieced units to the top and bottom of the four-patch center. The center striped unit should line up with the center four-patch.
- Using the picture as a guide, sew an 8 1/2" x 8 1/2" striped unit to opposite sides of a pinwheel block. Sew a pinwheel to both ends of this pieced segment. Make a total of two sets.
- Sew these pieced units to the sides of the pieced center.
- Quilt and bind as desired.

American Banner

Red Fabric (3/4 Yard):

Cut 5 – 2 ½” Strips the Width of the Fabric

Sub Cut **ONE** of the Strips into

2 – 2 ½” x 20 ½” Pieces

Cut 2 – 5” Strips

Sub Cut into 10 – 5” Squares

American Banner

Cream Fabric (1 ¼ Yards):

Cut 7– 2 ½” Strips the Width of the Fabric

Sub Cut **TWO** of the Strips into

4 – 2 ½” x 20 ½” Pieces

Cut 5 – 5” Strips the Width of the Fabric

Sub Cut into 40 – 5” Squares

American Banner

42” x 60”

\$

**You will also need 2 2/3 Yards of
Backing Fabric**

American Banner

Blue Fabric (7/8 Yard):

Cut 3 – 2 ½” Strips the Width of the Fabric

Sub Cut **ONE** of the Strips into 2 – 2 ½” x 20 ½” Pieces

Cut 4 – 5” Strips the Width of the Fabric

Sub Cut into 30 - 5” Squares

American Banner

Backing Fabric 2 2/3 Yards:

Cut 2 – 1 1/3 Yard Pieces (Horizontal Seam)

American Banner

Binding Fabric ½ Yard:

Cut 6 Strips the Width of the Fabric