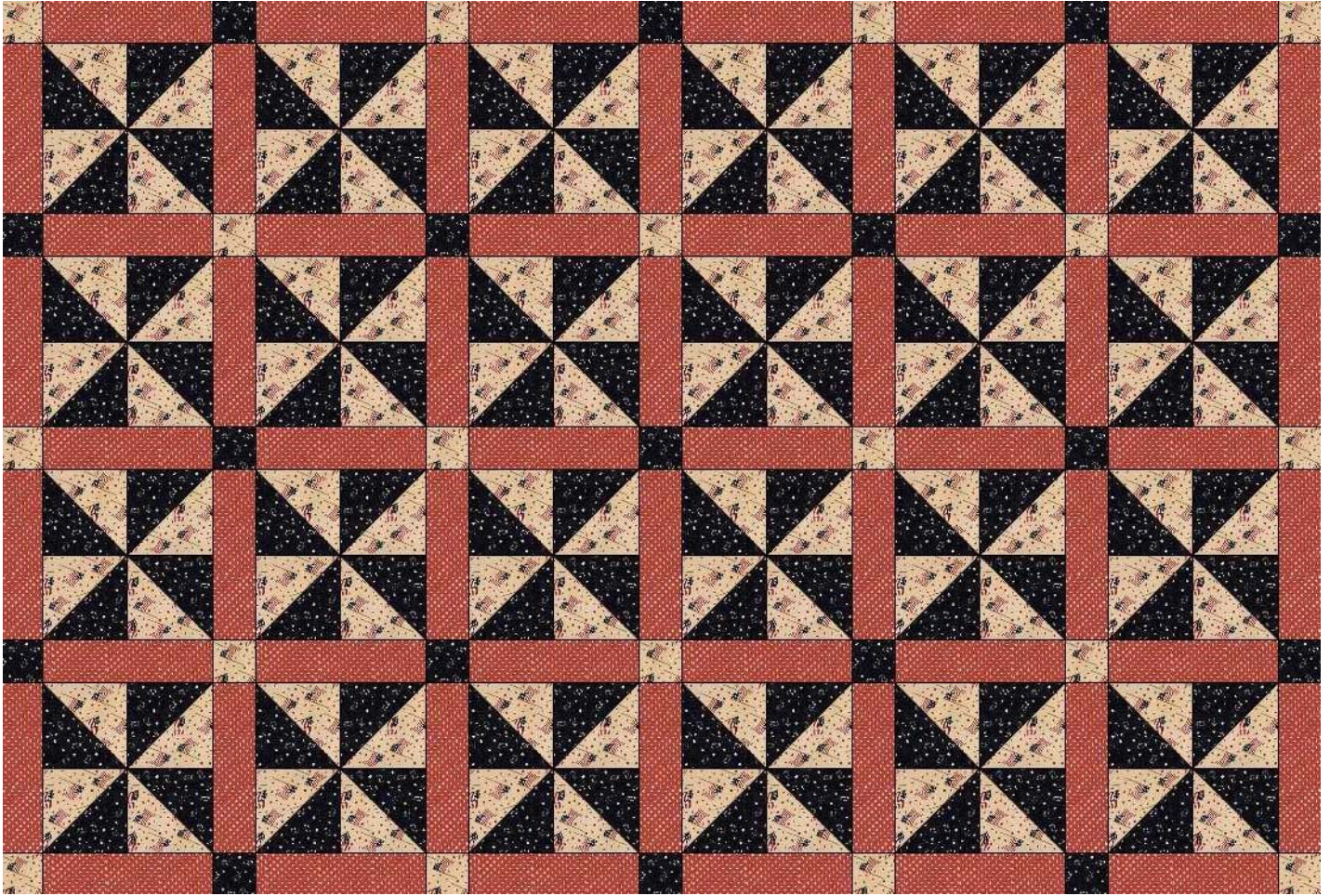


Diy-moms.COM

American Pinwheel

Designed by Rita Fishel to showcase the Creative Grid Charming Strip Stashbuster Ruler
(Item #CGRCSS)

Contact Rita at <http://www.creationssewclever.com/>

Finished Size: 42" x 62"

Featuring "America the Beautiful" by Judie Rothermel for Marcus Bros.

Fabric Requirements:

Red (Item #F432-110D)	1 ¼ Yards
Blue (Item #F423-110D)	1 ½ Yards
Cream (Item #F431-142D)	1 1/8 Yard
Backing Fabric (Your Choice)	2 2/3 Yards

American Pinwheel

Page Two

Cutting Instructions:

Red (Item #F432-110D)

1 ¼ Yards

Cut 15 – 2 ½” Strips the Width of the Fabric

Sub Cut Each Strip into 4 - 2 ½” x 8 ½” Rectangles -
You need 58

Blue (Item #F423-110D)

1 1/2 Yards

Cut 6 – 5” Strips the Width of the Fabric

Sub Cut Each Strip into 8 – 5” Squares –
You Need 48

Cut 2 – 2 ½” Strips the Width of the Fabric

Sub Cut Each Strip into 16 - 2 ½” Squares – You need 18

Cut 6 Strips the Width of the Fabric for the Binding

(Choose your Favorite Width up to 3”)

Cream (Item #F431-142D)

1 1/8 Yards

Cut 2 – 2 ½” Strips the Width of the Fabric

Sub Cut Each Strip into 16 - 2 ½” Squares – You need 18

Cut 6 – 5” Strips the Width of the Fabric

Sub Cut Each Strip into 8 – 5” Squares –
You Need 48

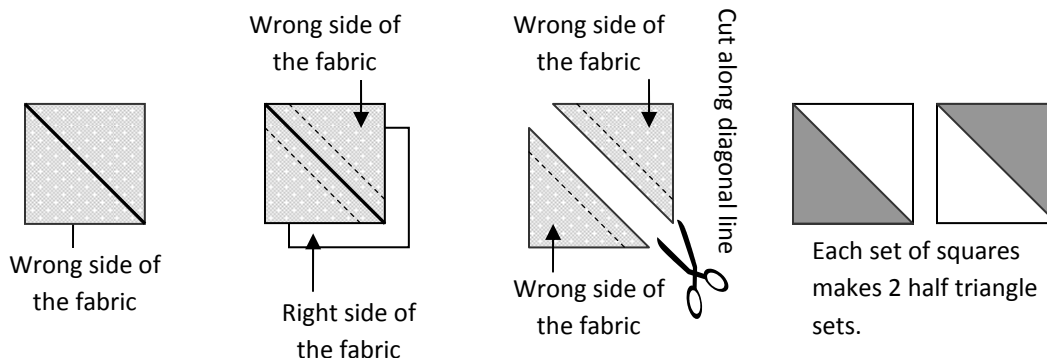
Backing Fabric

2 2/3 Yards

Cut 2 – 1 1/3 Yard Pieces (Horizontal Seam)

Half-Square Triangles – Make a total of 96:

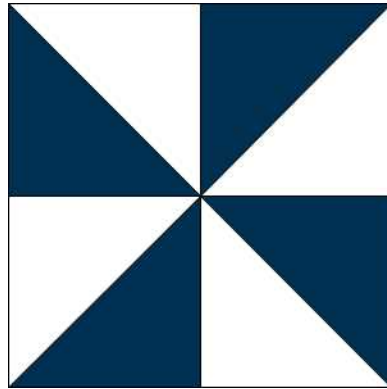
- Place a cream 5” square – right sides together – on top of a blue 5” square. Make a total of 48 sets. Draw a line across the diagonal and stitch a seam ¼” on each side of the drawn line. Be sure to use a pencil or a marking tool that is water soluble. (Ink may bleed onto your quilt when you wash it!) Cut on the drawn line.
- Open the half-square triangles and press the seam toward the blue fabric. Each set of squares will make two half-square triangle units. These blocks will be slightly larger than 4 ½”. Square these half-square triangles up to 4 ½” using the Charming Stashbuster Ruler.



Page Three

Pinwheels – Make 24:

- Sew four half-square triangles together to form a pinwheel.
- Make a total of 24 pinwheels.



Putting it all Together:

- Using the picture as a guide, lay out the pinwheels; the red rectangles; and the blue and cream squares. Sew these units together to complete your quilt top.
- Quilt as desired.

American Pinwheel

Red Fabric (1 ¼ Yards):

Cut 15 – 2 ½” Strips the Width of the Fabric

Sub Cut Each Strip into 4 - 2 ½” x 8 ½” Rectangles -

You need 58

American Pinwheel

Blue Fabric (1 ½ Yard):

Cut 6 – 5” Strips the Width of the Fabric

Sub Cut Each Strip into 8 – 5” Squares –

You Need 48

Cut 2 – 2 ½” Strips the Width of the Fabric

Sub Cut Each Strip into 16 - 2 ½” Squares –

You need 18

American Pinwheel

Cream Fabric (1 1/8 Yards):

Cut 2 – 2 ½” Strips the Width of the Fabric

Sub Cut Each Strip into 16 - 2 ½” Squares –

You need 18

Cut 6 – 5” Strips the Width of the Fabric

Sub Cut Each Strip into 8 – 5” Squares –

You Need 48

American Pinwheel

Backing Fabric 2 2/3 Yards:

Cut 2 – 1 1/3 Yard Pieces (Horizontal Seam)

American Pinwheel

42” x 62”

\$

**You will also need 2 2/3 Yards of
Backing Fabric**