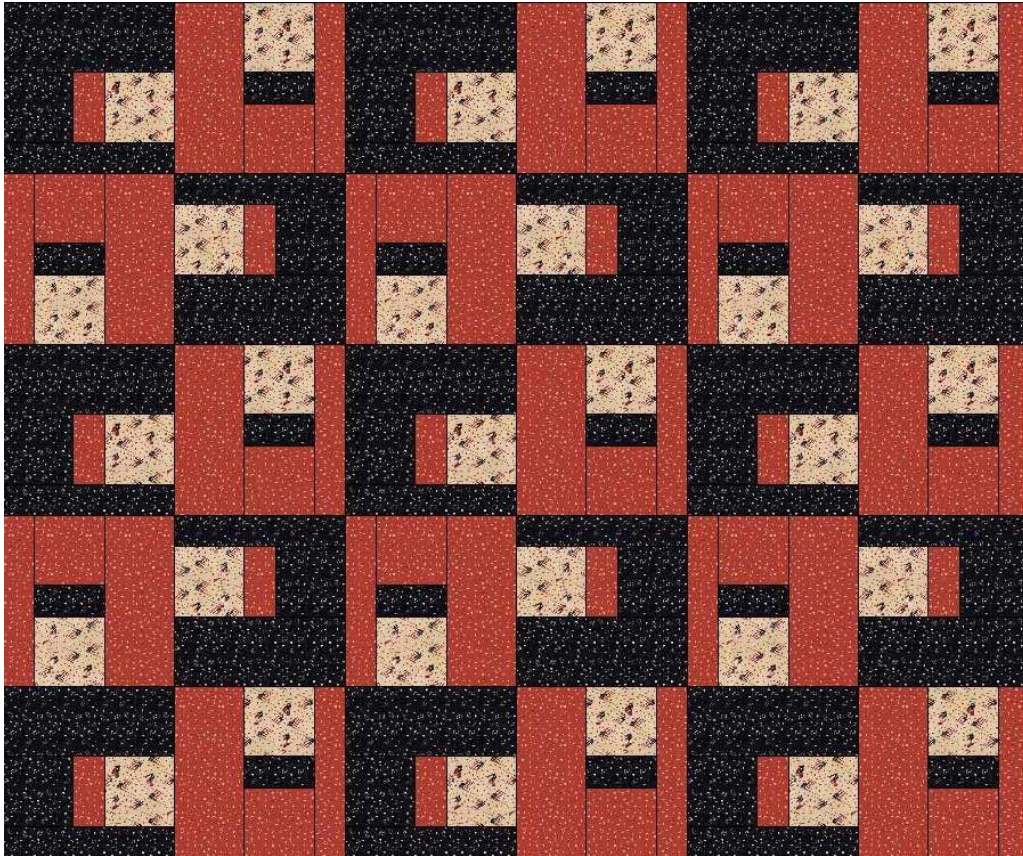


*Diy-moms*.COM  

## **American Squares**

Designed by Rita Fishel to showcase the Creative Grid Charming Strip Stashbuster Ruler  
(Item #CGRCSS)

Contact Rita at <http://www.creationssewclever.com/>

**Featuring “America the Beautiful” by Marcus Brothers, Designed by Judie Rothermel**

Finished Size: 44” x 66”

### **Fabric Requirements:**

<b>Red (Item #27124-1)</b>	<b>1 ½ Yards</b>
<b>Blue (Item #27124-5)</b>	<b>1 ½ Yards</b>
<b>Cream (Item #27124-6)</b>	<b>2/3 Yards</b>
<b>Binding Fabric (Your Choice)</b>	<b>½ Yard</b>
<b>Backing Fabric (Your Choice)</b>	<b>2 2/3 Yards</b>

# American Squares

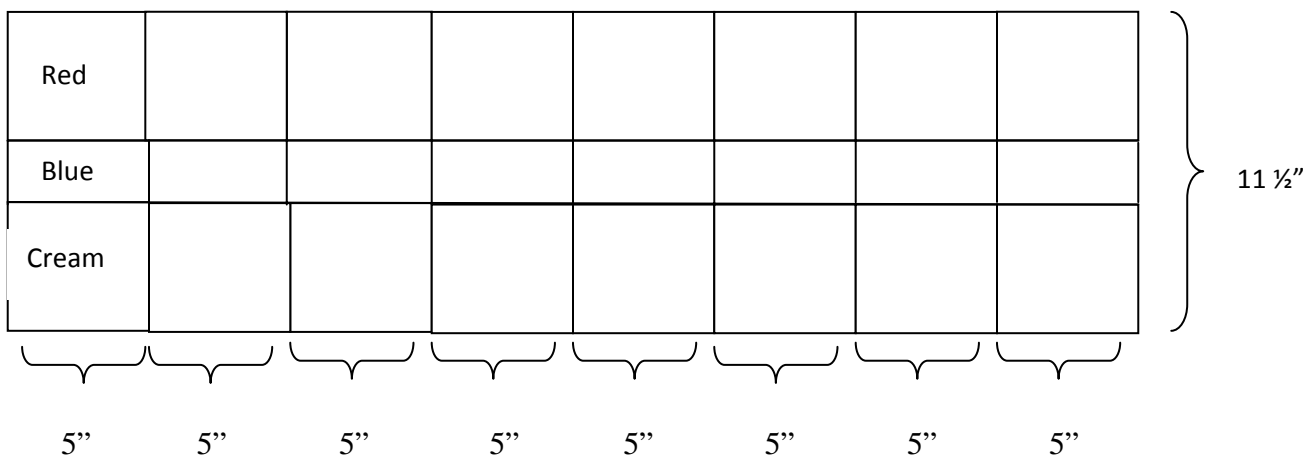
## Page Two

### Cutting Instructions:

- Red (Item #27124-1)**      **1 ½ Yards**      **Cut 7 – 2 ½” Strips the Width of the Fabric**  
Sub cut 5 of the strips into 15 – 11 ½” strips  
**Cut 7 – 5” Strip the Width of the Fabric**  
Sub cut 5 of the strips into 15 – 11 ½” strips
- Blue (Item #27124-5)**      **1 ½ Yards**      **Cut 7 – 2 ½” Strips the Width of the Fabric**  
Sub cut 5 of the strips into 15 – 11 ½” strips  
**Cut 7 – 5” Strip the Width of the Fabric**  
Sub cut 5 of the strips into 15 – 11 ½” strips
- Cream (Item #27124-6)**      **2/3 Yard**      **Cut 4 – 5” Strips the Width of the Fabric**
- Binding Fabric**      **½ Yard**      **Cut 6 Strips the Width of the Fabric for the Binding**
- Backing Fabric**      **3 ½ Yards**      **Cut 2 – 1 ¾ Yard Pieces (Horizontal Seam)**

### Red Blocks:

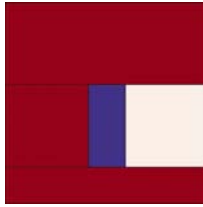
- Sew a 5” by width of fabric red strip to a 2 ½” by width of fabric blue strip along the 40” length of the strip. Sew a 5” by width of fabric cream strip to the other side of the blue fabric strip. Press the seams toward the blue strip. Make a total of two strip sets. These strip sets should be 11 ½” wide. Cut 15 – 5” striped units from these strip sets.



## American Squares

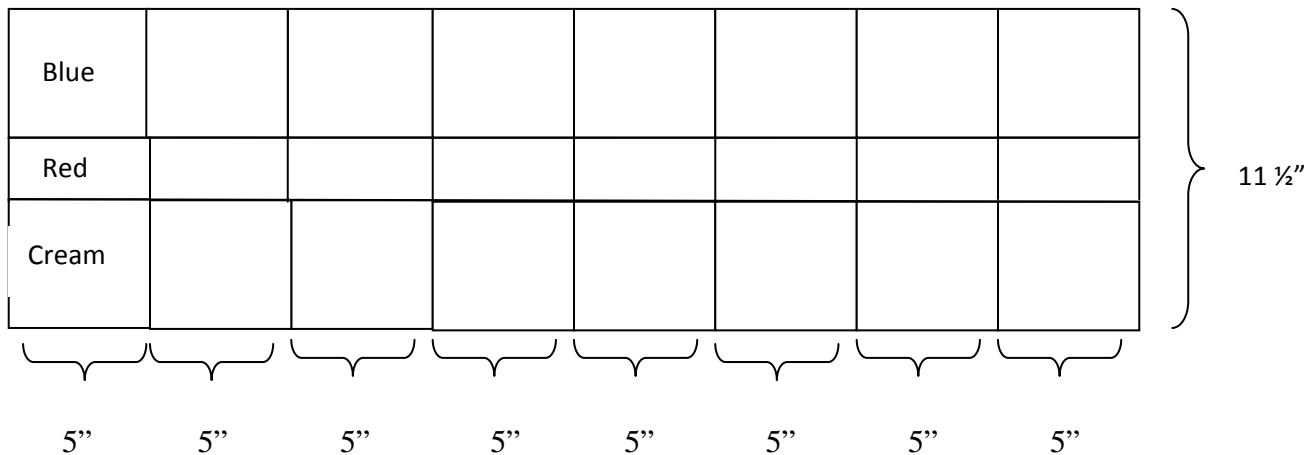
### Page Three

- Sew a 2 ½" x 11 ½" red strip to one side of each of these striped units. Sew a 5" x 11 ½" red strip to the other side of these striped units. Press the seams toward these added strips. Make a total of 15 red blocks.

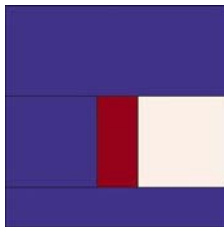


### Blue Blocks:

- Sew a 5" by width of fabric blue strip to a 2 ½" by width of fabric red strip along the 40" length of the strip. Sew a 5" by width of fabric cream strip to the other side of the red fabric strip. Press the seams toward the red strip. Make a total of two strip sets. These strip sets should be 11 ½" wide. Cut 15 – 5" striped units from these strip sets.



- Sew a 2 ½" x 11 ½" blue strip to one side of each of these striped units. Sew a 5" x 11 ½" blue strip to the other side of these striped units. Press the seams toward these added strips. Make a total of 15 blue blocks.



### Putting it all Together:

- Using the picture as a guide, sew five rows of six blocks together, alternating colors.
- Sew these five rows together to complete the quilt top. Quilt and bind as desired.

## **American Squares**

**Red Fabric (1 ½ Yards):**

**Cut 7 – 2 ½” Strips the Width of the Fabric**

Sub cut 5 of the strips into 15 – 11 ½” strips

**Cut 7 – 5” Strip the Width of the Fabric**

Sub cut 5 of the strips into 15 – 11 ½” strips

## **American Squares**

**Blue Fabric (1 ½ Yards):**

**Cut 7 – 2 ½” Strips the Width of the Fabric**

Sub cut 5 of the strips into 15 – 11 ½” strips

**Cut 7 – 5” Strip the Width of the Fabric**

Sub cut 5 of the strips into 15 – 11 ½” strips

## **American Squares**

**Cream Fabric (2/3 Yard):**

**Cut 4 – 5” Strips the Width of the Fabric**

## **American Squares**

**Backing Fabric 3 ½ Yards:**

**Cut 2 – 1 ¾ Yard Pieces (Horizontal Seam)**

## **American Squares**

**55” x 66”**

**\$**

**You will also need 3 ½ Yards of  
Backing Fabric**

## **American Squares**

**Binding Fabric ½ Yard:**

**Cut 6 Strips the Width of the Fabric**