

Diy-moms.COM


Indigo Quilt

Quilt designed by Marinda Stewart. Quilt measures approximately 50" x 50"

Fabric

1/2 yd each: CX3347 Indigo Branch-Black CX3346 Indigo Medallions-Black
 CX3345 Indigo Ribbons-Black CX3348 Indigo Paisley-Black
 CX3318 Mae-Ebony

3/8 yd each: CX3318 Mae-Cherry CX3323 Mary-Cherry
 CX3323 Mary-Ivory

1/4 yd each: CX3347 Indigo Branch-Red CX3346 Indigo Medallions-Red
 CX3345 Indigo Ribbons-Red CX3348 Indigo Paisley-Red

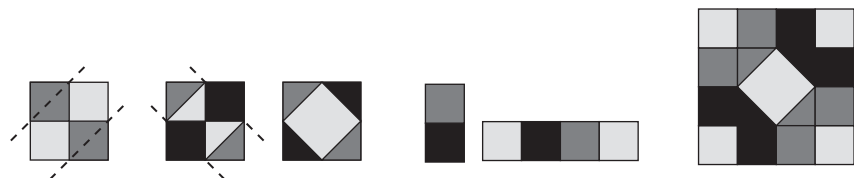
(1) 5" x 18" piece of CX3318 Sage (1) 3-1/2" x 5" piece CX3318 Sunny
 2 yd CX3347 Indigo Branch-Black for binding backing (cut and sew a 52" square)
 52" square thin cotton batting
 Fusible web and threads to match fabrics for applique

Cutting

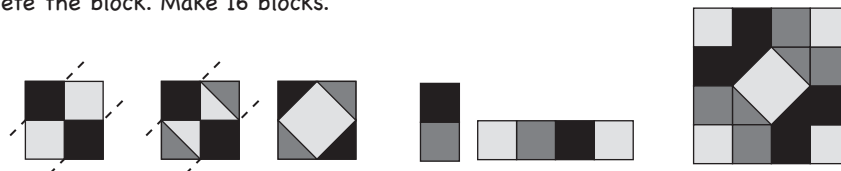
1. Cut (1) 16-1/2" square from CX3318 Ebony
2. Following manufacturer's directions, trace applique patterns onto fusible web, then iron applique pieces as follows: red petals onto CX3345 Red, flower center onto CX3318 Sunny, vase onto CX3348 Black, leaves and stems onto CX3318 Sage. Cut out patterns and remove paper backing.
3. Cut (48) 2-1/2" squares each from CX3347 Red and CX3347 Black, CX3345 Red and CX3345 Black, CX3348 Black and CX3348 Red, CX3346 Red and CX3346 Black.
4. Cut (64) 2-1/2" squares each from CX3318 Ebony and CX3318 Red.
5. Cut (16) 4-1/2" squares from CX3323 Ivory and CX3323 Cherry.

Sewing

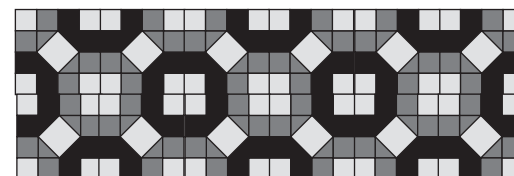
- Note: (1) 16" center block, (32) 8" pieced blocks. (48) 4" prairie points
6. Center Block: Arrange the applique pieces on the 16-1/2" square. Press and fuse in place. Using threads to match the fabric colors sew around the outside edges of each applique piece with a narrow zig-zag satin stitch.
 7. For the pieced blocks with red centers, place red CX3345 and CX3346 2-1/2" squares in opposite corners of a red 4-1/2" CX3323 square. Sew in a diagonal line from corner to corner. Trim away excess fabric 1/4" from the seam line and press. Place black CX3348 and CX3347 squares in remaining corners. Stitch, fold out, trim and press to make a square in square unit. Sew 1 red CX3348 square to 1 black CX3347 square. Sew 1 red CX3345 square to 1 black CX3348 square. Sew the sets of squares opposite sides of the square in square unit. Sew a row of squares CX3318 ebony, CX3348 red, CX3347 black and CX3318 red. Sew a row of squares CX3318 red, CX3348 black, CX3345 red and CX3318 ebony. Sew these rows to the top and bottom to complete the block. Make 16 blocks.



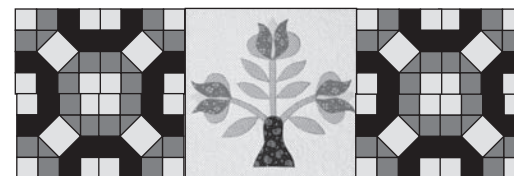
8. For the pieced blocks with black centers, place black CX3348 and CX3347 2-1/2" squares in opposite corners of a black 4-1/2" CX3323 square. Sew in a diagonal line from corner to corner. Trim away excess fabric 1/4" from the seam line and press. Place red CX3345 and CX3346 squares in remaining corners. Stitch, fold out, trim and press to make a square in square unit. Sew 1 black CX3346 square to 1 red CX3347 square. Sew 1 red CX3346 square to 1 black CX3345 square. Sew the sets of squares to opposite sides of the square in square unit. Sew a row of squares CX3318 red, CX3347 black, CX3348 red and CX3318 ebony. Sew a row of squares CX3318 ebony, CX3345 red, CX3346 black and CX3318 red. Sew these rows to the top and bottom to complete the block. Make 16 blocks.



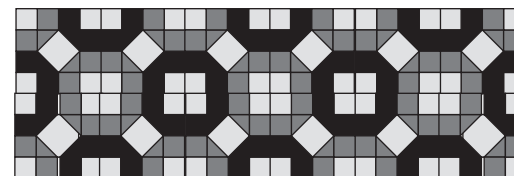
9. Sew two rows of pieced blocks together, alternating the red and black centers. Make two sets of double rows.



10. Sew 2 red center blocks and 2 black center blocks in a square. Make 2 squares. Sew the squares to opposite sides of the center applique block.



11. Sew the remaining set of double rows to the bottom of the center row to complete the quilt top.



12. Layer the quilt top, batting and backing. Quilt the layers together. Trim batting and backing even with quilt top. Fold the 4-1/2" black print squares in half to make a rectangle, then fold the corners down and in towards the center with of the rectangle with raw edges to make a prairie point unit. Make 48. Pin 12 prairie points on around edges of the right side of the quilt. Pin the narrow binding in place on top of the points and sew all around the quilt. Turn binding to back with prairie points facing out and stitch the raw edge of the binding in place to finish.

Disclaimers

- * This pattern is provided as a courtesy to quilt stores, catalogs and quilters. Michael Miller Fabrics, LLC is not responsible for the accuracy of any Kits packaged to accompany this pattern. Please direct any inquiries to the kit maker.
- *Yardage requirements for this pattern may allow for excess yardage to accommodate specific placement of motifs or to allow for any fussy-cutting to achieve the finished quilt design.
- *While every attempt has been made to give accurate measurements, yardage requirements and construction directions, this does not allow for personal variations in measuring, cutting and/or sewing. The enclosed directions were used in the construction of the original quilt.